



*Valeriana pyrenaica* L.



*Valeriana montana* L.



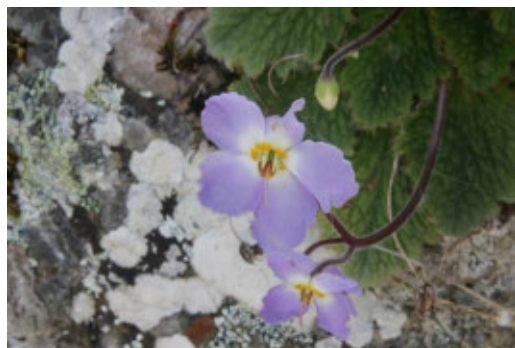
*Vincetoxicum hirundinaria* Medik.



*Erinus alpinus* L.



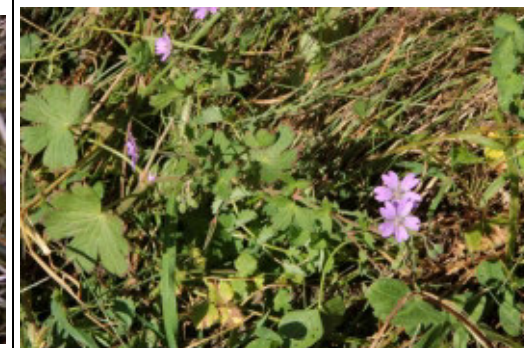
*Lathraea squamaria* L.



*Ramonda myconi* (L.) Rchb.



*Pinguicula vulgaris* L.



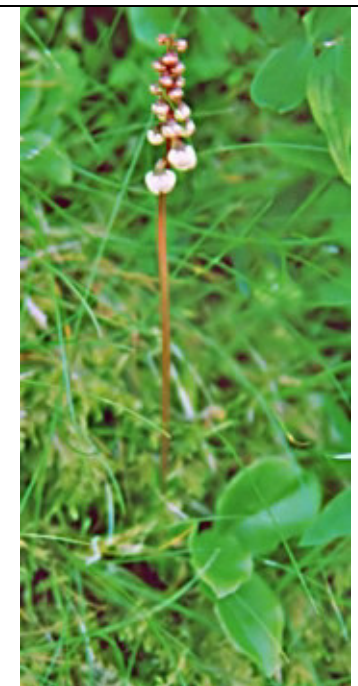
*Geranium pyrenaicum* Burm.f.



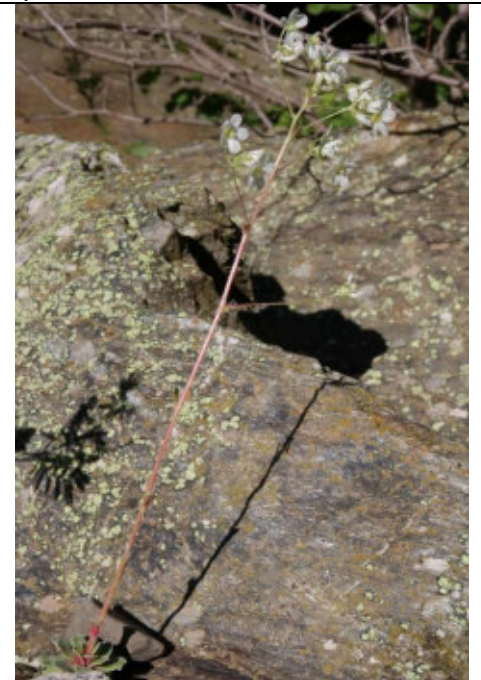
*Geranium phaeum* L. *Aquilegia vulgaris* L. *Trollius europaeus* L. *Thalictrum aquilegifolium* L.



*Lilium pyrenaicum* Gouan *Scilla verna* Huds. *Narcissus pseudonarcissus* L. *Cephalanthera longifolia* (L.) Fritsch



*Gymnadenia conopsea* (L.) R.Br. *Neotinea ustulata* (L.) Bateman, Pridgeon & Chase *Meconopsis cambrica* (L.) Vig. *Pyrola minor* L.



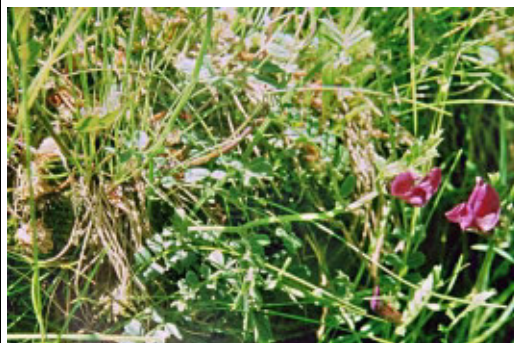
*Campanula glomerata* L. *Phyteuma spicatum* L. *Saxifraga hirsuta* L. *Saxifraga paniculata* Mill.



*Potentilla rupestris* L.



*Sorbus aria* (L.) Crantz



*Vicia pyrenaica* Pourr.



*Silene vulgaris* (Moench) Garcke



*Silene dioica* (L.) Clairv.



*Primula elatior* (L.) Hill